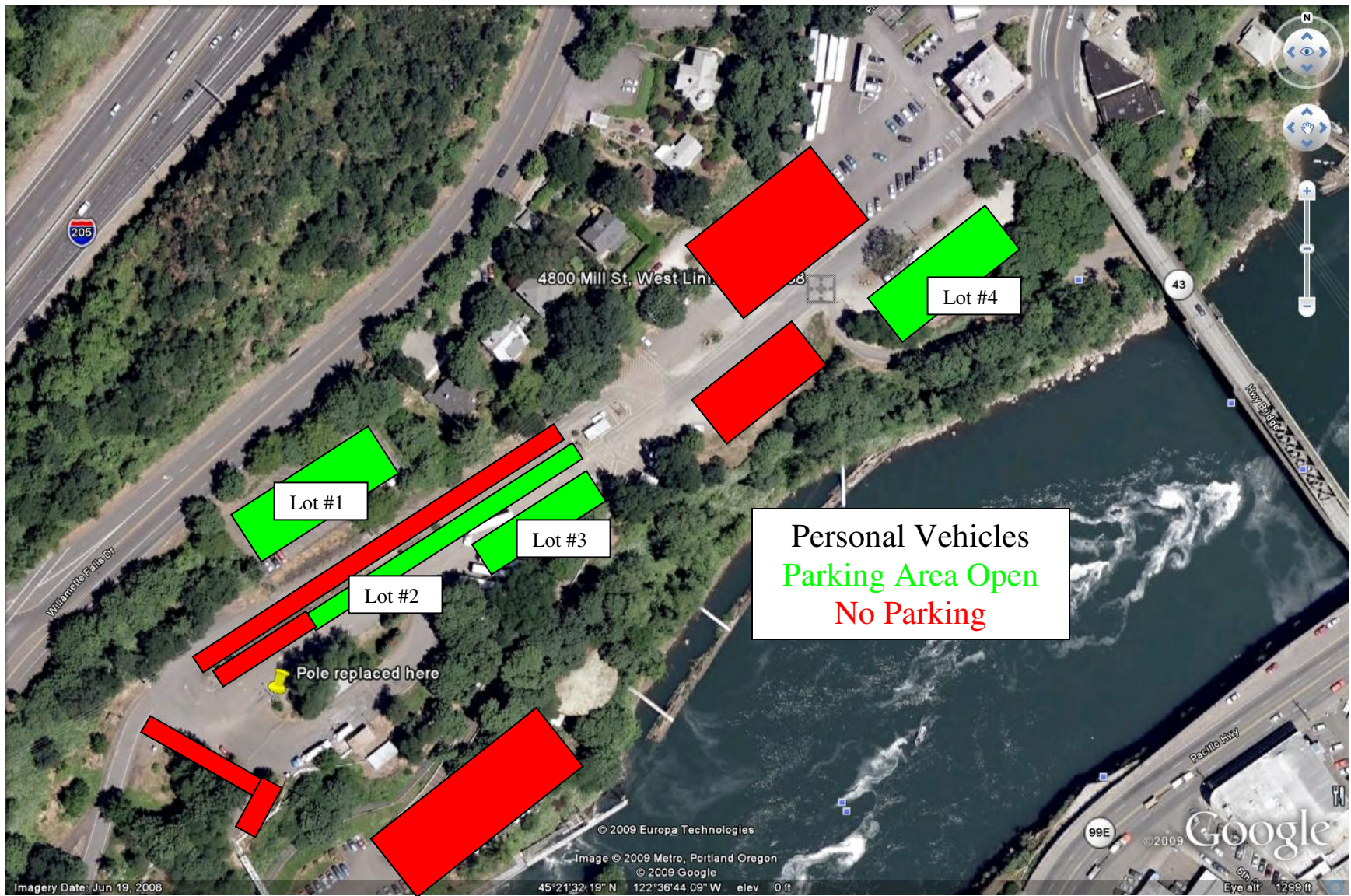


EMERGENCY CONDITIONS UPDATE

West Linn Paper Company, West Linn Mill

Current Conditions

Current Date & Time: December 30, 2009 at 6:20 p.m.	Next Update:
<p>The lower lot is open for parking.</p> <p><i>Notes: Please familiarize yourself with the 'Snow Event' parking map below. Scroll down to view it. The map shows where to park your personal vehicle when Snow Event parking is in effect (green areas) & where not to park (red areas).</i></p> <p><i>When Snow Event parking is in effect, employees should park in Lot #1 (the Willamette Falls Drive parking lot), Lot #2 (immediately south of the Shipping & Receiving office to the crest of the hill), Lot #3 (on the east side of the incoming road across from the Shipping & Receiving office), and Lot #4 (the Truck Breakdown Lot). Employees should not park in and vacate the lower lot, the south end of the main lot, and along the outbound truck lane. This will help keep roadways cleared and trucks moving. Pedestrians should use the truck hill or main walkway by the Admin-Building to walk to-from the parking lots.</i></p> <p><i>Parking instructions will appear here and also be recorded on the Emergency Conditions Hotline (503-557-6538) when Snow Event parking is in effect. Snow Event parking is NOT in effect at this time.</i></p>	



Lot #1

Lot #2

Lot #3

Lot #4

Personal Vehicles
Parking Area Open
No Parking

Pole replaced here

4800 Mill St. West Lin...

Imagery Date: Jun 19, 2008

© 2009 Europa Technologies
Image © 2009 Metro, Portland Oregon
© 2009 Google
45°21'32.19" N 122°36'44.09" W elev 0 ft

99E

Pasillo Hwy

Google

Eye alt 1299 ft